

Josias Byles Sanctuary

Ashford, CT

The Josias Byles Sanctuary is a 69-acre parcel that was given to the Trust in 1988 by Filmac Associates when the Birch Hills Condominiums were developed just to the east. It was part of the original 226 acre Byles farm bought by Josias Byles in 1726. His son Ebenezer's house still stands near the southeast corner of the Sanctuary.

Byles Brook runs east to west through the property, and joins the the Mount Hope River near the northwest corner. The Yellow Trail takes the visitor to a viewpoint over the beaver impoundments near this junction.



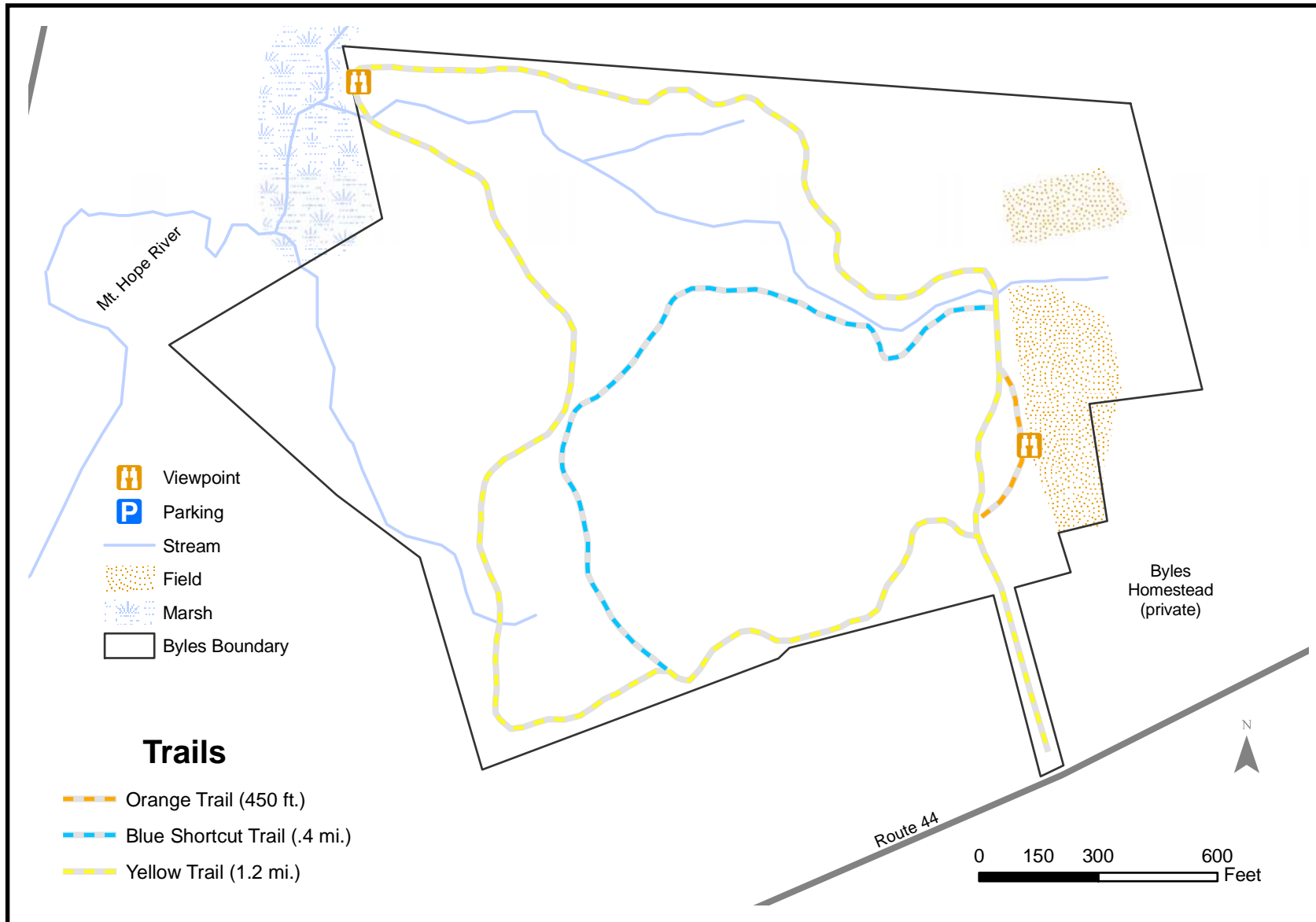
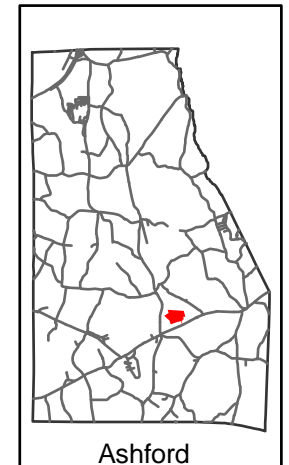
Joshua's Trust

Please help the Trust safeguard this preserve by following these rules:
Take only pictures and leave only footprints.
Keep dogs on leash.
NO: motor vehicles, horses, fires, or camping

To report a problem, please contact us at: 860 429-9023 or joshuastrust@snet.net

Learn more about the Trust at: joshuaslandtrust.org

Location:



Directions: The entrance to this sanctuary is a fifty foot wide strip on the north side of Rt. 44 at .5 miles east of the intersection of Rts. 44 and 89 in Ashford. The driveway of an adjacent house shares the same land. Please be sure not to block this driveway when parking.